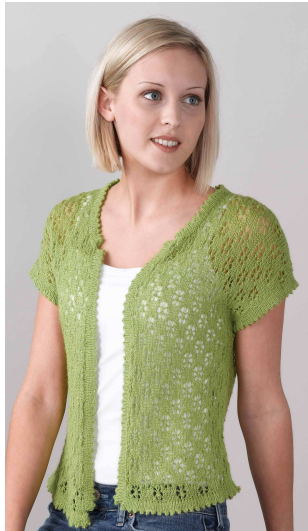


#171 Vintage Vest

Designed by Linda Burt



Finished Chest Sizes:
36(39,42,46,48)''

Materials:

Valley Yarns 2/14
Alpaca/Silk (80% Alpaca/
20% Silk, 1736 yds)
1 cone Nile Green.
Size 4 and 7 needles or size
to obtain gauge.

Gauge:

5 sts and 7 rows = 1'' with
larger size needles.

Snowflake Lace pattern:

(pattern is a multiple of 8 sts + 5)

Row 1: k 4, *ssk, yo, k1, yo, k2 tog, k3, rep from * end k 1.

Row 2: and all wrong side rows: purl.

Row 3: k 5, *yo, sl2, k1, p2sso, yo, knit 5, rep from *

Row 5: Repeat row 1.

Row 7: ssk, yo, k1, yo, k2 tog, * k3, ssk, yo, k1, yo, k2 tog, rep
from *

Row 9: k1, *yo, sl 2, k1, p2sso, yo, k5, rep from * end
Yo, sl 2, k1, p2sso, yo, k1.

Row 11: Repeat row 7.

Repeat rows 1 – 12 for pattern.

*Pattern note: Incorporate lace pattern into increases.

Work all bind offs loosely.

Back:

Cast on 85(93,101,109,117) sts. with smaller needles.

Starting with a purl row, work in st st for 7 rows.

Next row: *K2tog, yo; repeat from * to last st, k1.

Continue in st st for 7 more rows. This completes the
border.

Change to larger needles. The knit side should be facing
you for the next row. Knit 2 rows in st st.

Begin lace pattern and at the same time inc 1 st on each end
every 22 rows 3 times. 91(99,107,115,123)sts

Knit until piece measures 10'' from beg of lace pattern.

Place marker at each side to indicate beg of armhole edge.

Continue in lace pattern inc 1 st on each end every

7(7,8,8,9) rows, 7 times. 105(113,121,129,137)sts.

Knit until armhole measures 7.5(8,8.5,9,9.5)''

Bind off 8(9,10,11,12) sts at beg of next 8 rows. Bind off
remaining sts.

Left front:

With smaller needles cast on 45(45,53,61,69)sts.

Work border as for back.

Change to larger needles and knit 2 rows st st.

Begin lace pattern and at the same time inc 1 st at beg of
right side rows (right side) every 22 rows 3 times.

48(48,56,64,72)sts.

Knit until piece measures 10'' from beg of lace pattern.

Place marker at beg of right side to indicate beg of armhole
edge.

Continue in lace pattern inc 1 st at armhole edge every

7(7,8,8,9) rows, 7 times, while at the same time, knit until
piece measures 16''.

Bind off at neck edge 5(5,13,24,29)sts once, 3 sts once, 2 sts
once and then 1 st 4 times, every other row.

Knit until front measures same length as back to shoulders
shaping.

Bind off 8(9,10,11,12) sts at beg of next 4 right side rows.

Right front:

With smaller needles cast on 45(45,53,61,69)sts.

Work border as for back.

Change to larger needles and knit 2 rows in st st.

Begin lace pattern and at the same time inc 1 st at beg of
wrong side rows (left side) every 22 rows 3 times.

48(48,56,64,72)sts.

Knit until piece measures 10'' from beg of lace pattern.

Place marker at beg of left side to indicate beg of armhole
edge.

Continue in lace pattern inc 1 st at armhole edge every
7(7,8,8,9) rows, 7 times, while at the same time, knit until
piece measures 16''. End after knitting a wrong side row.

Bind off at neck edge 5(5,13,24,29)sts once, 3 sts once, 2 sts
once and 1 st 4 times every other row.

Knit until front is same length as back to shoulder shaping.''

Bind off 8(9,10,11,12) sts at beg of next 4 wrong side rows.

Sew shoulder seams.

Front edges:

With smaller needles pick up 79 sts along 1 front edge,
starting after bottom border.

Starting with a purl row, work in st st, for 7 rows.

Next row: k 2 tog, yo, repeat across row.

Continue in st st for 7 rows more binding off on last
row.

Neck edge:

With smaller needles pick up 91(99,105,109,115) sts around
neck edge starting after front edge border.

Starting with a purl row, work in st st for 7 rows.

Next row: K 2 tog, yo, repeat across row.

Continue in st st for 7 rows binding off on last row.

Armhole edges:

With smaller needles pick up 69(75,79,85,89)sts around
armhole edge.

Starting with a purl row, knit in st st for 7 rows.

Next row: k2 tog, yo, repeat across row.

Continue in st st for 7 more rows binding off on last row.

Finishing:

Fold bands in half to inside along picot edge and stitch in
place. Block vest. Sew side seams.

