

#222 Chevron Tunic

Designed by Kirsten Hipsky



Finished Sizes:

35 (40, 44, 49)"

Materials:

7 (9, 10, 12) ske Valley Yarns Springfield (88% Cotton/12% Nylon, 110 yds/50g) color o6 blue

US size 6 needles or size needed to obtain gauge
Crochet hook

Gauge:

20 sts and 28 rows = 4" in St st on size 6 needles OR SIZE NEEDED TO OBTAIN GAUGE.

Abbreviations:

yo = yarnover
ssk = slip two stitches individually as if to knit, insert tip of LH needle up into both stitches and knit them together

k2tog = knit 2 together

sl2tog -k1-p2sso = central double decrease; slip 2 sts AS IF TO KNIT 2 TOGETHER, k1, pass 2 sts over the k1.

Chevron Lace Pattern (multiple of 12 sts +3):

Row 1 and all WS rows: Purl.

Row 2: K2, *yo, ssk, k7, k2tog, yo, k1; rep from * to last st, k1.

Row 4: K2, *k1, yo, ssk, k5, k2tog, yo, k2; rep from * to last st, k1.

Row 6: K2, *[yo, ssk] twice, k3, [k2tog, yo] twice, k1; rep from * to last st, k1.

Row 8: K2, *k1, [yo, ssk] twice, k1, [k2tog, yo] twice, k2; rep from * to last st, k1.

Row 10: K2, *[yo, ssk] twice, yo, sl2tog-k1-p2sso, yo, [k2tog, yo] twice, k1; rep from * to last st, k1.

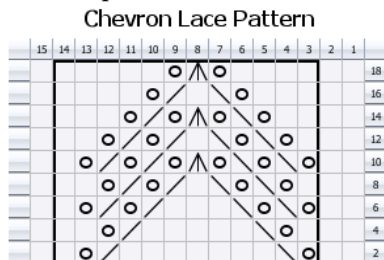
Row 12: As row 8.

Row 14: K2, *k2, yo, ssk, yo, sl2tog-k1-p2sso, yo, k2tog, yo, k3; rep from * to last st, k1.

Row 16: K2, *k3, yo, ssk, k1, k2tog, yo, k4; rep from * to last st, k1.

Row 18: K2, *k4, yo, sl2tog-k1-p2sso, yo, k5; rep from * to last st, k1.

Rep Rows 1-18 for pattern.



Legend:

<input type="checkbox"/>	knit
<input type="radio"/>	yo
<input type="checkbox"/>	ssk
<input type="checkbox"/>	k2tog
<input type="checkbox"/>	Central Double Dec

Created in Knit Visualizer (www.knitfoundry.com)

Back:

CO 87 (99, 111, 123) sts.

Knit 3 rows. Work in St st for 1", ending with a RS row.

Work in Chevron Lace Pattern for 36 rows. Change to St st, decreasing at beg and end of every 8th (8th, 8th, 10th) row 5 times. Work even in St st until piece measures 12.5 (13, 13.5, 14)" from CO edge, ending with a RS row. Then increase at beg and end of every 8th (8th, 8th, 10th) row 5 times. Work even in St st until piece measures 18.5 (19.5, 20.5, 21.5)" from CO edge, ending with a WS row.

Armhole shaping:

BO 5 sts at beg and end of next 2 rows, then decrease at beg and end of each RS row 5 times. 67 (79, 91, 103) sts. Work even until armhole measures 7.5 (8, 8.5, 9)", ending with a WS row.

Shoulder Shaping:

BO 4 (5, 6, 7) sts at beg of next 6 rows. BO remaining 43 (49, 55, 61) sts.

Front:

CO 87 (99, 111, 123) sts.

Work as for back to armhole shaping. Shape armholes as for back, then work neck shaping as follows.

Neck shaping:

Next RS row: K33 (39, 45, 51), BO 1 stitch, k to end.

WS row: P33 (39, 45, 51). Turn work.

You'll now be working on the right front only.

Continuing to work in St st, decrease at the beg of each RS row 21 (24, 27, 30) times. 12 (15, 18, 21) sts.

Work even in St st until armhole matches back, ending with a RS row. BO 4 (5, 6, 7) sts at beg of next 3 rows.

Left front:

Work as for right front, reversing shaping.

Finishing:

Sew side and shoulder seams. With crochet hook, work one round single crochet, then 1 round reverse single crochet around armholes and neckline.

Sew in all loose ends and block to desired measurements.

