

## #225 Firmaments Lace Shawl

Designed by Bonnie Sennott



Emily's Firmaments Shawl is a circular lace shawl constructed using Elizabeth Zimmerman's Pi Shawl shaping.<sup>1</sup> It was inspired by this poem by the American poet Emily Dickinson (1830–1886):

Perhaps I asked too large –  
I take – no less than skies –  
For Earths, grow thick as  
Berries, in my native town –

My Basket holds – just – Firmaments –  
Those – dangle easy – on my arm,  
But smaller bundles – Cram.  
-Emily Dickinson (1830-1886)

### Finished Size:

Approx. 56" diameter after blocking

### Materials:

1 cone Valley Yarns 2/14 Alpaca Silk 80% alpaca, 20% silk, 1736 yards per cone. Color 16, French Blue  
Size 3 (3.25 mm) needles in double pointed (dpn) and circular, 16," 24," and 29" (41cm, 60cm, and 80cm) long, OR  
SIZE TO OBTAIN GAUGE

Stitch markers

### Gauge:

approx. 22 sts = 4" (10cm) in st st after blocking

### Abbreviations:

K: Knit

Ktbl: Knit through the back of loop

K2tog: Knit 2 st together

K3tog: Knit 3 st together

Sl-k2tog-pssso: Slip 1 st knitwise to right-hand needle, knit 2 st together, pass the slipped st over

Sl2-k1-p2sso: Slip 2 st knitwise to right-hand needle, knit 1 st, pass the 2 slipped st over

Ssk: Slip 2 st knitwise to right-hand needle, knit the 2 st together

Yo: Yarn over

S: Slip st as if to purl, with yarn in front

### Inc rnd:

\*Yo, k1; rep from\*—number of sts doubled.

### Shawl:

Begin on dpns; change to progressively longer circulars when there are a comfortable number of stitches on the needles. Cast on 9 sts and distribute evenly over 3 dpn. Place marker for beginning of round and join, being careful not to twist sts. Knit 1 rnd.

1st inc rnd: Work inc rnd—18 sts.

K 3 rnds.

2nd inc rnd: Work inc rnd—36 sts.

K 6 rnds.

3rd inc rnd: Work inc rnd—72 sts.

K 12 rnds.

4th inc rnd: Work inc rnd—144 sts.

K 5 rnds.

Begin Chart A (Emily's Diamonds):

Rnd 1 Work 12-st rep 12 times. Continue to work Chart A through rnd 15.

K 4 rnds.

5th inc rnd: Work inc rnd—288 sts.

Knit 3 rnds.

Begin Chart B (Starlight Lace): *Before beginning, note instructions for shifting markers in this section.*

Rnd 1 Work 6-st rep 48 times. Continue to work Chart B through rnd 16.

Work rnds 1-16 once more, then work rnds 1-9.

Knit 4 rnds.

6th inc rnd: Work inc rnd—576 sts.

K 2 rnds.

Begin Chart C (Elongated Fountain Lace):

Rnd 1 Work 18-st rep 32 times. Continue to work Chart C 9 times, then work rnd 1 once more.

K 3 rnds.

Work Edging (see edging instructions).

### Chart A (Emily's Diamonds) multiple of 12 sts

Rnd 1: \*K3, k2tog, yo, k1, yo, ssk, k4; rep from \*

Rnd 2 and all even rnds: Knit

Rnd 3: \*K2, k2tog, yo, k3, yo, ssk, k3; rep from \*

Rnd 5: \*K1, k2tog, yo, k1, yo, sl-k2tog-pssso, yo, k1, yo, ssk, k2; rep from \*

Rnd 7: \*K1, yo, ssk, k1, ktbl, k1, ktbl, k1, k2tog, yo, k2; rep from \*

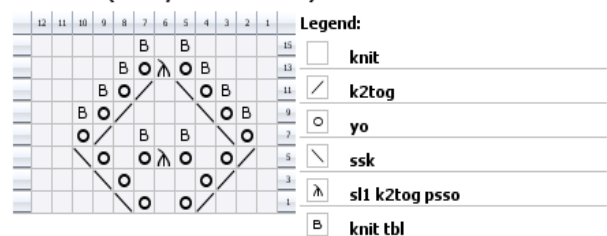
Rnd 9: \*K1, ktbl, yo, ssk, k3, k2tog, yo, ktbl, k2; rep from \*

Rnd 11: \*K2, ktbl, yo, ssk, k1, k2tog, yo, ktbl, k3; rep from \*

Rnd 13: \*K3, ktbl, yo, sl-k2tog-pssso, yo, ktbl, k4; rep from \*

Rnd 15: \*K4, ktbl, k1, ktbl, k5; rep from \*

### Chart A (Emily's Diamonds):



Created in Knit Visualizer ([www.knitfoundry.com](http://www.knitfoundry.com))

<sup>1</sup> More information about Zimmerman's Pi Shawl can be found in Martha Waterman, *Traditional Knitted Lace Shawls*, and Nancy J. Thomas, ed., *The Best of Knitter's Magazine: Shawls and Scarves*.

**Chart B (Starlight Lace)** *multiple of 6 sts*

Rnd 1: \*Ssk, k1, yo, ssk, ktbl, yo; rep from \* *Note: When working rnd 1 the 2nd and 3rd times, markers used to set off reps will be shifted 1 st right throughout rnd.*

Rnd 2 and all even rnds: Knit

Rnd 3: \*K2tog, yo, ktbl, yo, ssk, ktbl; rep from \*

Rnd 5: Remove marker, k1, replace marker, \*yo, sl2-k1-p2sso, yo, sl-k2tog-pss0; rep from \* (St count decreases to 4 st per rep.) *Note: Markers used to set off reps will be shifted 1 st left throughout rnd 5.*

Rnd 7: \*Ktbl, yo, k1, yo, ktbl, k1; rep from \* (St count is restored to 6 st per rep.)

Rnd 8: Knit (as for all even rnds); on last 6-st rep, *knit to last st before beginning marker, sl st to right needle, remove marker, sl st back to left needle, replace marker; marker shifted 1 st right.*

Rnd 9: \*Ssk, ktbl, yo, ssk, k1, yo; rep from \* *Note: Markers used to set off reps will be shifted 1 st right throughout rnd.*

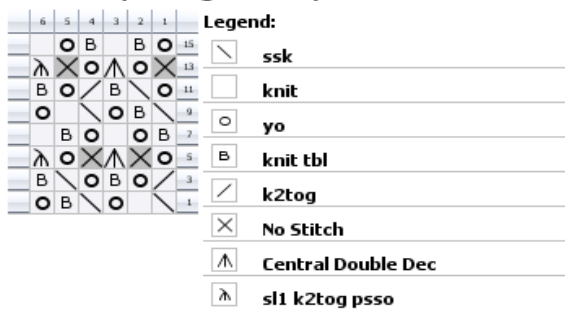
Rnd 11: \*Yo, ssk, ktbl, k2tog, yo, ktbl; rep from \*

Rnd 13: Same as rnd 5

Rnd 15: \*Yo, ktbl, k1, ktbl, yo, k1; rep from \* (St count is restored to 6 st per rep.)

Rnd 16: Same as rnd 8

**Chart B (Starlight Lace)**



Created in Knit Visualizer ([www.knitfoundry.com](http://www.knitfoundry.com))

**Notes:**

Refer to written instructions for information on slipping markers on Rnds 1, 5, 8, 9, 13, and 16

**Chart C (Elongated Fountain Lace)** *multiple of 18 sts*

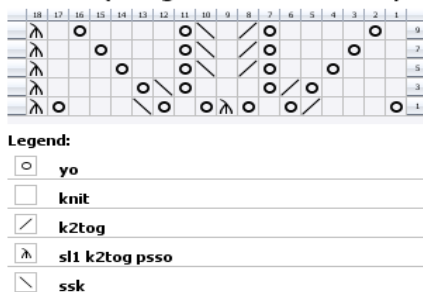
Rnd 1: \*Yo, k3, k2tog, yo, k1, yo, sl-k2tog-pss0, yo, k1, yo, ssk, k3, yo, sl-k2tog-pss0; rep from \*

Rnd 2 and all even rnds: Remove beginning marker, k1, replace marker, knit to end of round. Markers used to set off pattern reps are moved 1 st left throughout rnd.

Rnd 3: \*K4, yo, k2tog, yo, k3, yo, ssk, yo, k4, sl-k2tog-pss0; rep from \*

Rnd 5: \*K3, yo, k2, yo, k2tog, k1, ssk, yo, k2, yo, k3, sl-k2tog-pss0; rep from \*

**Chart C (Elongated Fountain Lace)**



Created in Knit Visualizer ([www.knitfoundry.com](http://www.knitfoundry.com))

**Notes:**

At beg of Rnd 2 and all even rnds: remove marker, k1, replace marker; marker is shift 1 st to the left.

Rnd 7: \*K2, yo, k3, yo, k2tog, k1, ssk, yo, k3, yo, k2, sl-k2tog-pss0; rep from \*

Rnd 9: \*k1, yo, k4, yo, k2tog, k1, ssk, yo, k4, yo, k1, sl-k2tog-pss0; rep from \*

Rnd 10: Knit.

**Edging:**

The garter-stitch edging is worked back and forth, clockwise, around the edge of the shawl. RS (odd-numbered) rows are knit from the shawl outward; WS (even-numbered) rows are knit from the outside toward the shawl and the last st is always knit tog with 1 st from the shawl needle. Consequently, there are 2 rows of edging for every 1 shawl st.

Place point protector on left-hand shawl needle. Using right shawl needle, cast on 11 st using scrap yarn and provisional cast on; turn. Work edging set-up row using a spare dpn.

**Begin Chart D (Diamond Edging):**

Using shawl needle and dpn, work 12-row pattern 95 times, then work rows 1-11 once more (96 reps total). Carefully remove scrap yarn from provisional cast on and place live st on dpn. Graft beginning and ending st.

Edging set-up row: K2, p1, k1, p1, k1, p1, k3, k last st tog with 1 st from shawl needle. Turn.

**Chart D (Diamond Edging)** *stitch count varies*

Row 1: K2, k2tog, yo, k2tog, yo, k3, yo, k2. Turn.

Row 2: Slip first st with yarn in front, as if to purl. Move yarn to back. K1, p1, k3, p1, k1, p1, k2, k last st tog with 1 st from shawl needle. Turn.

Row 3: K1, k2tog, yo, k2tog, yo, k5, yo, k2.

Row 4: Slip first st with yarn in front, as if to purl. Move yarn to back. K1, p1, k5, p1, k1, p1, k1, k last st tog with 1 st from shawl needle.

Row 5: K3, yo, k2tog, yo, k2tog, k1, k2tog, yo, k2tog, k1.

Row 6: Slip first st with yarn in front, as if to purl. Move yarn to back. K1, p1, k3, p1, k1, p1, k2, k last st tog with 1 st from shawl needle.

Row 7: K4, yo, k2tog, yo, k3tog, yo, k2tog, k1.

Row 8: Slip first st with yarn in front, as if to purl. Move yarn to back. K1, p1, k1, p1, k1, p1, k3, k last st tog with 1 st from shawl needle.

Row 9: K5, yo, k3tog, yo, k2tog, k1.

Row 10: Slip first st with yarn in front, as if to purl. Move yarn to back. K1, p1, k1, p1, k4, k last st tog with 1 st from shawl needle.

Row 11: k3, k2tog, yo, k2tog, yo, k1, yo, k2.

Row 12: Slip first st with yarn in front, as if to purl. Move yarn to back. K1, p1, k1, p1, k1, p1, k3, k last st tog with 1 st from shawl needle.

**Chart D (Diamond Edging)**



Created in Knit Visualizer ([www.knitfoundry.com](http://www.knitfoundry.com))

**Finishing:**

Weave in ends and block to desired measurements.