



ITEM NO. | PAT54

OLIVIA COWL

EASY ●●○○



Item in photo knit with 100% organic merino in Sugar Maple.

One of my perennial favorites, the basketweave stitch is really a “tromp l’oeil” technique that only uses knits and purls but appears to create an over and under woven texture. I think it appears much more complex than it truly is. This version puts a new twist on the whole concept: the stitch pattern is still worked in traditional back and forth rows, but has a simple bias slant built into the fabric, so the texture appears to be worked on the diagonal instead of straight. The bias effect gives this cowl a lovely drape. Worked with only one skein, this little project is such fun to knit, it would make a great take-along project for a weekend trip. Everyone in our office wants one for immediate use this fall!

PATTERN DESIGN BY MICHELE ROSE ORNE

TECHNICAL INFORMATION

MATERIALS

1 skein Swans Island Natural Colors, 100% Organic Merino, worsted weight (100 gms, 250 yds each) Color Shown: *Sugar Maple (Limited Edition)*

US size 8 (5 mm) straight needles, or size needed to obtain gauge.

Smooth scrap yarn and US size H/8 (5 mm) crochet hook for provisional cast on, yarn needle, blocking wires (optional).

SIZES

One size

FINISHED DIMENSIONS

Width: 6¾"

Circumference: 41"

(Note: Because of the bias of the stitch pattern, the finished dimensions are based on the actual measurements of the sample cowl rather than by the gauge.)

GAUGE

4¼ sts x 6½ rows = 1" in Bias Basketweave Pattern.

To get the fit you want please check your gauge.

ABBREVIATIONS

k = knit

M1 = make one by picking up loop between 2 sts and knitting into back of loop

p = purl

patt = pattern

RS = right side

rep = repeat

ssk = slip 2 sts, 1 at a time, knitwise to the right needle; return sts to left needle in turned position and knit them together through the back loops

st(s) = stitch(es)

WS = wrong side

PATTERN STITCHES

Provisional Cast-on Method: With scrap yarn, beg with slipknot on crochet hook. *Wrap yarn around knitting needle counter-clockwise, then use crochet hook to draw yarn through loop on hook; rep from * for desired number of sts. Fasten off.

Kitchener Stitch:

Thread yarn tail into yarn needle. For best results lay work flat on table to work kitchener stitch.

Step 1: Insert yarn needle up from back to front (as if to purl), through the first "live" st on bottom needle, leaving st on knitting needle.

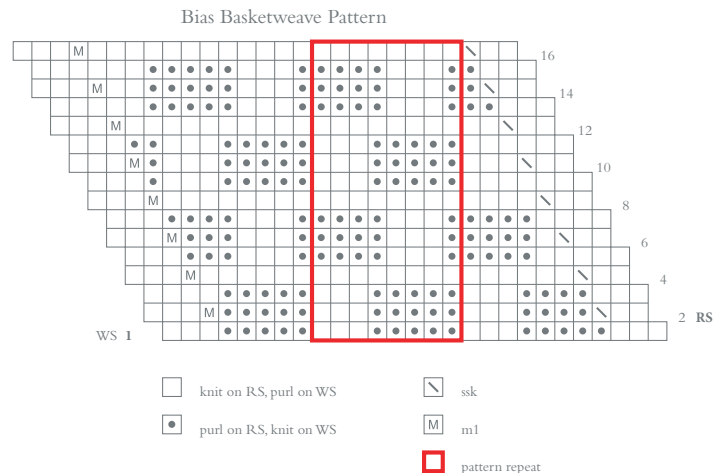
Step 2: Insert yarn needle from front to back (as if to knit) through first "live" st on top needle. Remove this st from needle.

Step 3: Insert yarn needle from back to front (as if to purl) into next st (now the "first" st) on top needle, leaving st on the needle.

Step 4: Insert yarn needle into front of first st on bottom needle and remove this st from needle.

Step 5: Insert yarn needle into next st on bottom needle (now the "first" st on bottom needle) from back to front (as if to purl), leaving st on needle.

Repeat steps 2–5 until all sts are removed from both needles. Try to keep the tension of your sewing sts the same as the tension of your knitting. When complete, seam should be invisible.



INSTRUCTIONS

COWL

Use Provisional method to cast on 43 sts.

Work rows 1–16 of Bias Basketweave Patt 12 times, then work rows 1–15 once more. [207 rows total.]

Cut yarn, leaving an extra long tail (about 30") to use for grafting together the two ends of the cowl.

FINISHING

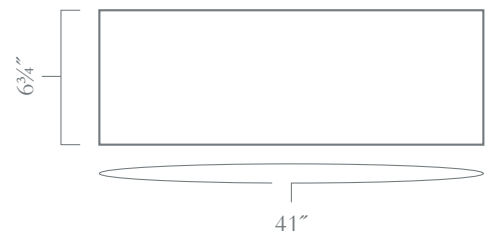
Remove provisional cast on and place live sts onto empty needle.

With tail threaded on yarn needle, join sts using Kitchener St, being careful not to twist the cowl. (Note: The row of stitches created by the Kitchener St will create the equivalent of the last

row of the final pattern repeat (row 16, which is all knit stitches.)

Work in all loose ends and lightly steam block if desired.

SCHEMATIC



Please visit our website for our full collection of patterns and naturally dyed, organic merino and other all natural yarns. — SwansIslandBlankets.com

© 2012 Swans Island Blankets. All Rights Reserved.