

Leaf-Motif Wrap



Leaf-Motif Wrap

Design by Unjung Un

Oversized wrap worked in panels of leaf motifs and dropped stitches.

■■■■□ INTERMEDIATE 

KNITTED MEASUREMENTS

- Width 22½"/57cm
- Length approx 71"/180cm

MATERIALS

VALLEY YARNS

www.yarn.com

- 4 3½oz/100g hanks (each approx 439yd/ 401m) of Valley Yarns *Charlemont* (wool/ nylon) in natural
- One pair size 3 (3.25mm) needles, OR SIZE TO OBTAIN GAUGE

GAUGES

- 28 sts and 33 rows = 4"/10cm over St st using size 3 (3.25mm) needles.
- 24 sts and 50 rows = 4"/10cm over garter st using size 3 (3.25mm) needles.

TAKE TIME TO CHECK GAUGES.

SINGLE CAST-ON AT END OF ROW

- 1) Wrap the yarn from the ball around your left thumb from front to back and secure it in your palm with your other fingers.
- 2) Insert the needle upwards through the strand on your thumb.
- 3) Slip this loop from your thumb onto the needle, pulling the yarn from the ball to tighten. Cont in this way until all the sts are cast on.

NOTE

For a video showing this leaf tier pattern, visit our YouTube channel.

SHAWL

First leaf tier

Cast on 3 sts.

Beg chart 1

Work rows 1 through 12 of chart 1—13 sts.

Row 13 (RS) K13, cast on 4 sts.

Work rows 14–24 of chart 1.

Row 25 (RS) K17, cast on 4 sts.

Row 26 (WS) K17, drop next st allowing it to unravel down to cast on, turn—17 sts on LH needle, 3 sts remaining on RH needle are on hold for future use.

Work 12-row rep (rows 15–26) 11 times more, then rows 159–180—14 leaves and 3 sts rem on RH needle.

2nd leaf tier

Beg chart 2

Beg with last 3 sts from last leaf worked, work rows 1–12 of chart 2.

Row 13 (RS) K13, yo, k 3 sts on hold from previous tier.

Work rows 14–25 of chart 2.

Work 12-row rep 12 times more.

Work rows 170–178 of chart 2—14 leaves and 3 sts rem on RH needle.

3rd leaf tier

Beg chart 1

Beg with last 3 sts from last leaf worked, work rows 1 through 12 of chart 1.

Row 13 (RS) K13, yo, k 3 sts on hold from previous tier.

Work rows 14–24 of chart 1.

Row 25 (RS) K17, yo, k 3 sts on hold from previous tier.

Row 26 (WS) K17, drop next st allowing it to unravel down to cast on, turn—17 sts on LH needle, 3 sts rem on RH needle and are on hold for future use.

Work 12-row rep 11 times more, then rows 159–180—14 leaves.

Work [2nd leaf tier, 3rd leaf tier] 17 times more, then work 2nd leaf tier once more.

Final leaf tier

NOTE When binding off, do not cut yarn and fasten off at last st. Push yarn ball through big loop of last st on RH needle and pull snugly to finish off.

Beg chart 3

Work rows 1 through 12 of chart 3.

Row 13 (RS) K13, yo, k 3 sts on hold from previous tier.

Work rows 14–24 of chart 1.

Row 25 (RS) Bind off 3 sts knitwise (see above note), k13, yo, k 3 sts on hold from previous tier.

Row 26 (WS) K17, drop next st allowing it to unravel down to cast on, turn—17 sts on LH needle

Work 12-row rep 11 times more, then rows 159–180—14 leaves.

Bind off.

FINISHING

Block piece to measurements. ■

*For all pattern-related inquiries please visit www.vogueknitting.com

CHART 2

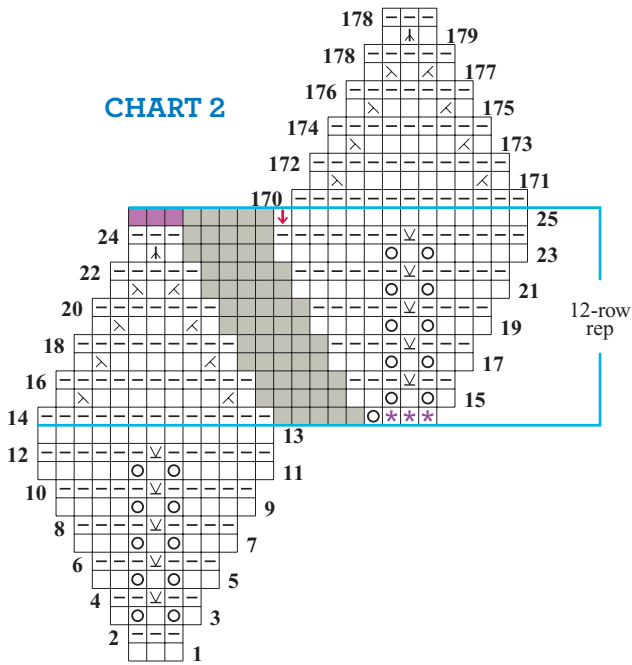


CHART 3

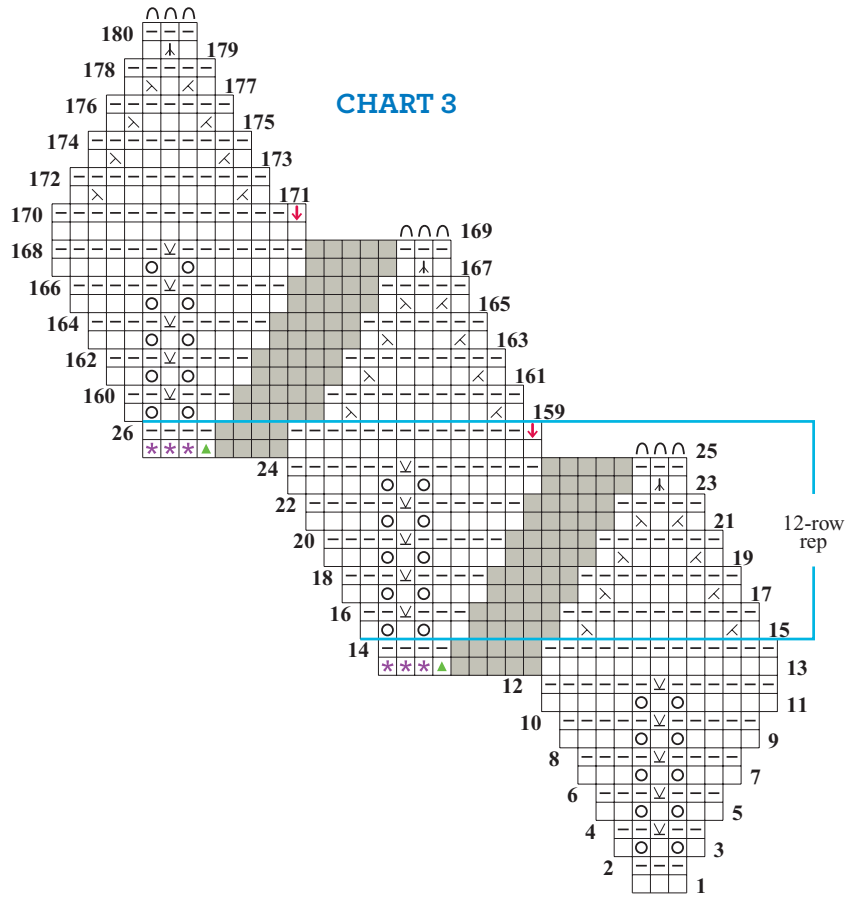
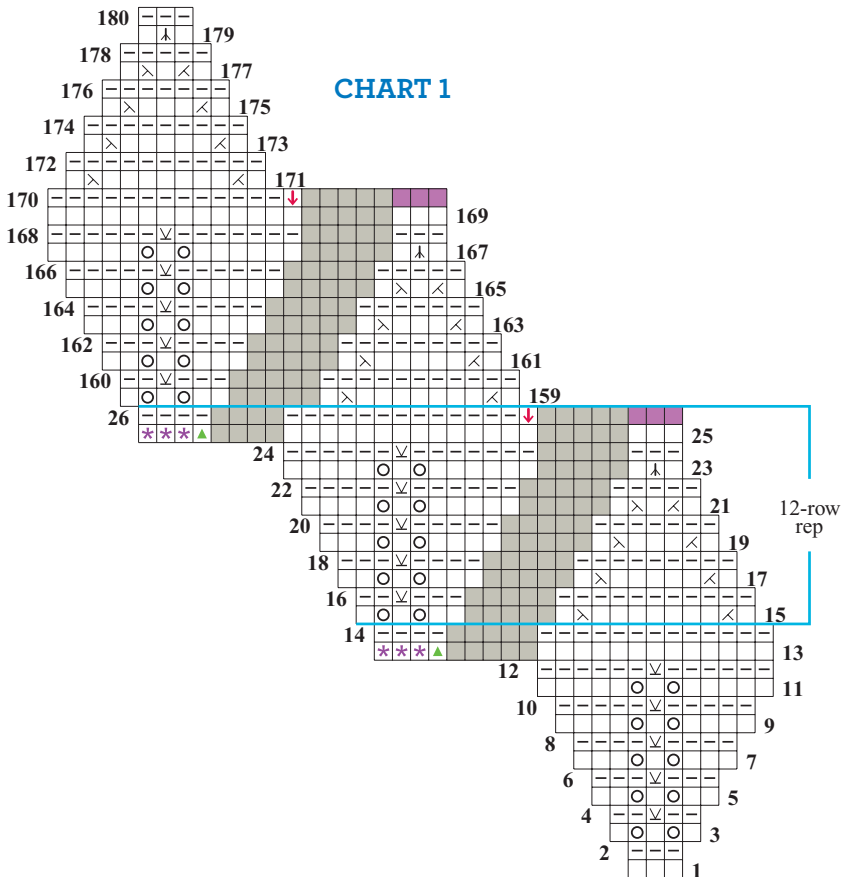


CHART 1



Stitch Key

- k on RS, p on WS
- p on RS, k on WS
- no stitch
- yo
- k2tog
- ssk
- S2KP
- ↓ drop st to release ladder
- stitches on hold for next tier
- ↘ slip 1 wyib on RS, slip 1 wyif on WS
- ▲ cast on 1 st on 1st tier; yo on all other tiers
- * cast on 1 st on 1st tier; k1 held st from previous tier on all other tiers
- bind off 3 sts knitwise, fasten off, do *not* cut yarn

*For all pattern-related inquiries please visit www.vogueknitting.com